



# Communities of Practice in the European Commission

## Overview

*Coralia Catana, Susanne Szkola*

*Joint Research Centre, European Commission*

2nd ACT International Synergy Conference

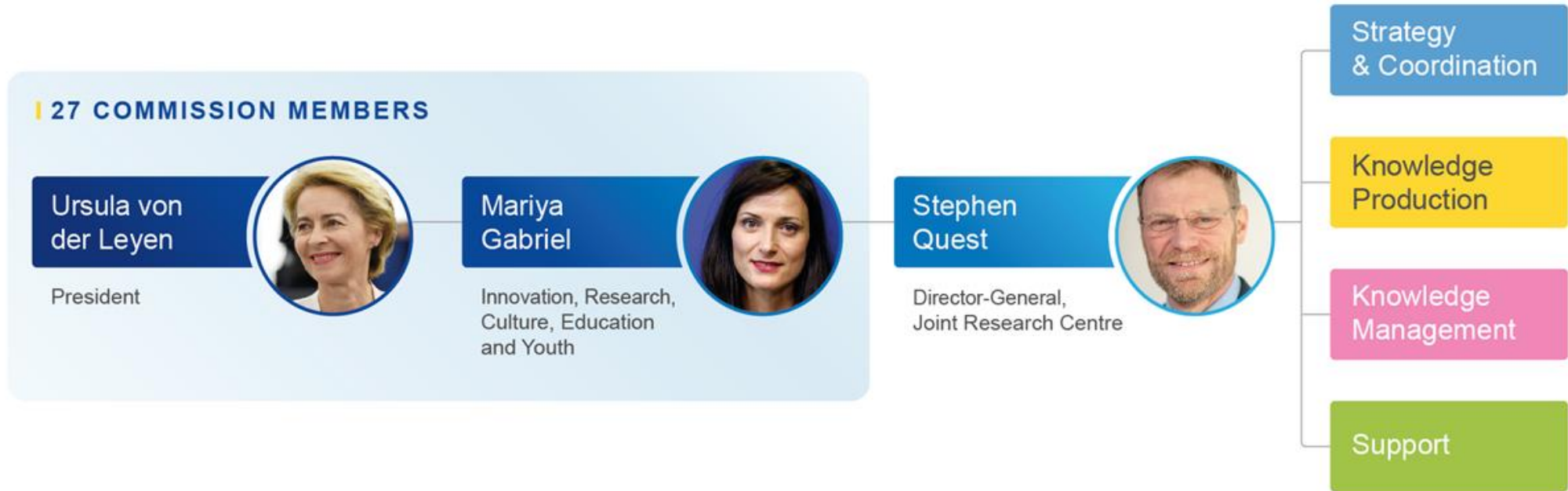
11 February 2021

# The need for evidence to inform policy

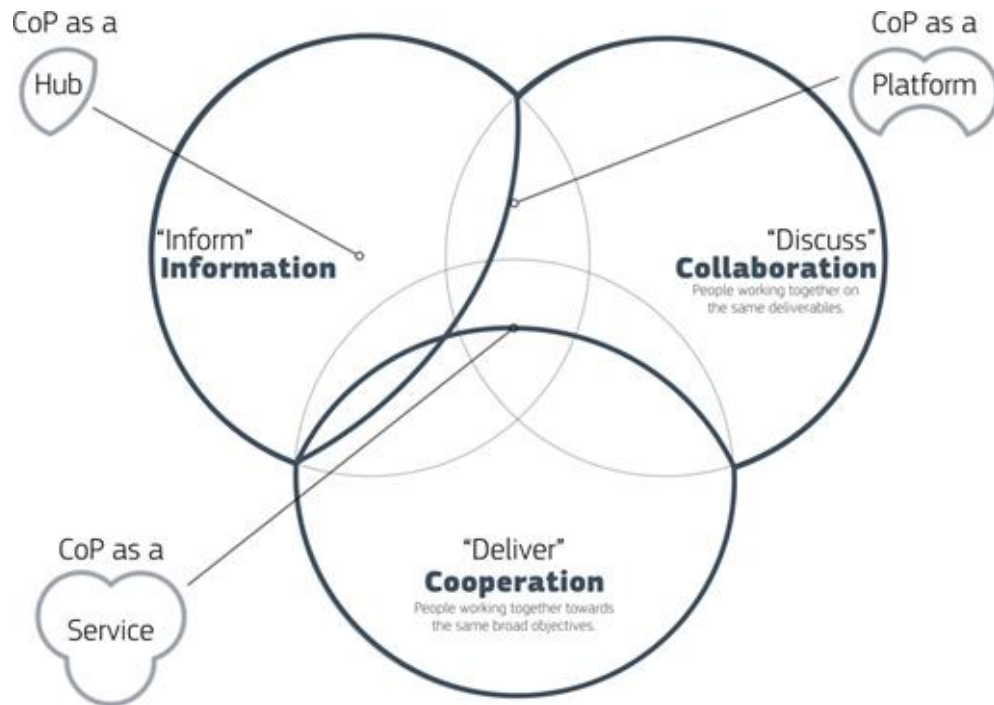


- As a strategic partner at the core of the Commission, the JRC is co-designing its work programme with policy DGs and/or Member States.
- We are in the fortunate position of being a research institute inside the executive arm of the EU, able to participate in policymaking discussions.
- We have +2000 scientists and we cover many scientific disciplines + support almost all EU policies.
- This gives us the role to connect disciplines and policies and talk directly to policymakers.

# The JRC within the Commission

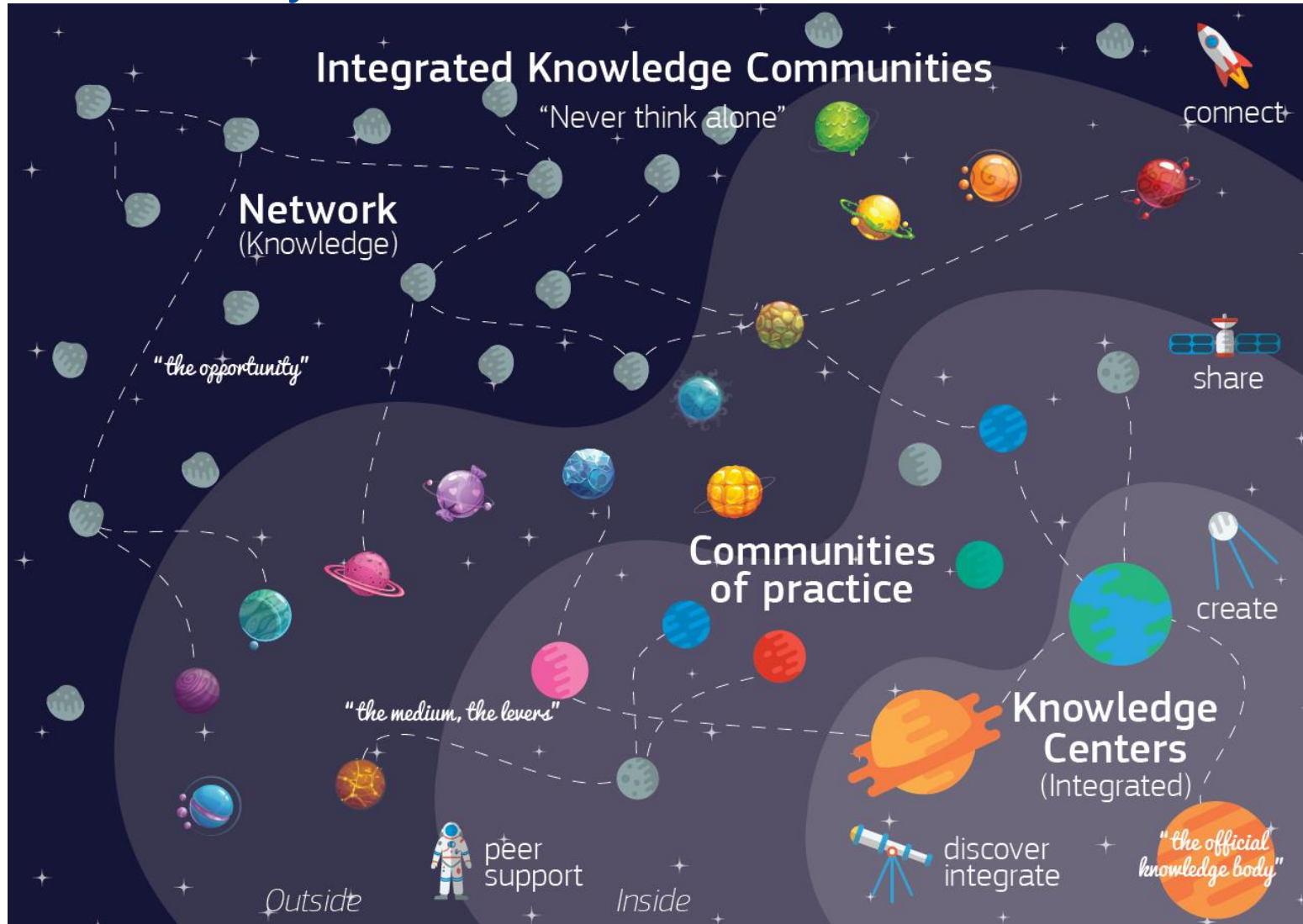


# The European Commission and Joint Research Centre Community Universe



- Better **gathering, sharing and using of data, information and knowledge** are essential to **deliver integrated policy work and overcome silo mentalities**.
- This is highlighted explicitly in *European Commission President von der Leyen's work guidelines stipulating transparency* and the ambition to become a **digitally transformed, user-focused and data-driven administration**.
  - Foster collaboration among internal and external stakeholders
  - Convene groups with different knowledge perspectives
  - Strengthen capacity to work and learn creatively together
  - Harness the collective intelligence and improve performance

# The European Commission and Joint Research Centre Community Universe



# The European Commission Communities –their nature

- **Around 50 communities of practice:**

- Thematic (*e.g. Migration and Demography, Fairness, Composite Indicators, Cities, etc.*)
- Horizontal (*Knowledge Management for Policy, Communication, Participatory Leadership, Data Visualisation, Modelling etc.*)
- Formal (or linked to a formal structure)
- Informal, as bottom-up initiatives from employees (*e.g. EUStaff4Climate*)
- Internal/external (with external partners)
- Emerging/sustainable (vary a lot in terms of maturity level)

- **Role of community manager:**

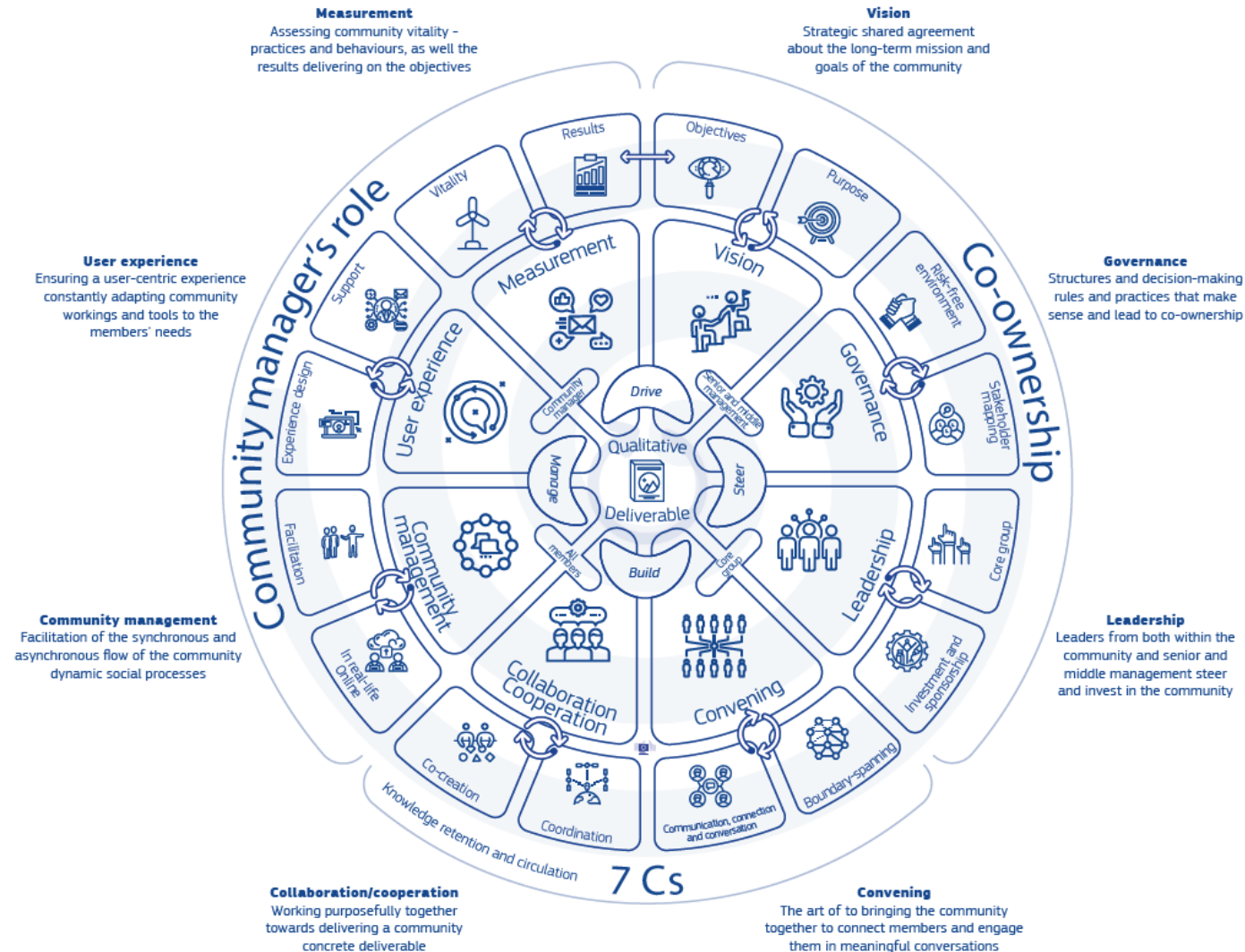
- Organiser, convenor/catalyst, synthesizer/knowledge manager or broker
- In job description/ profile (varying a lot in terms of mandate/time/resource allocation)
- Learning path in development

# Vitality levers and roles



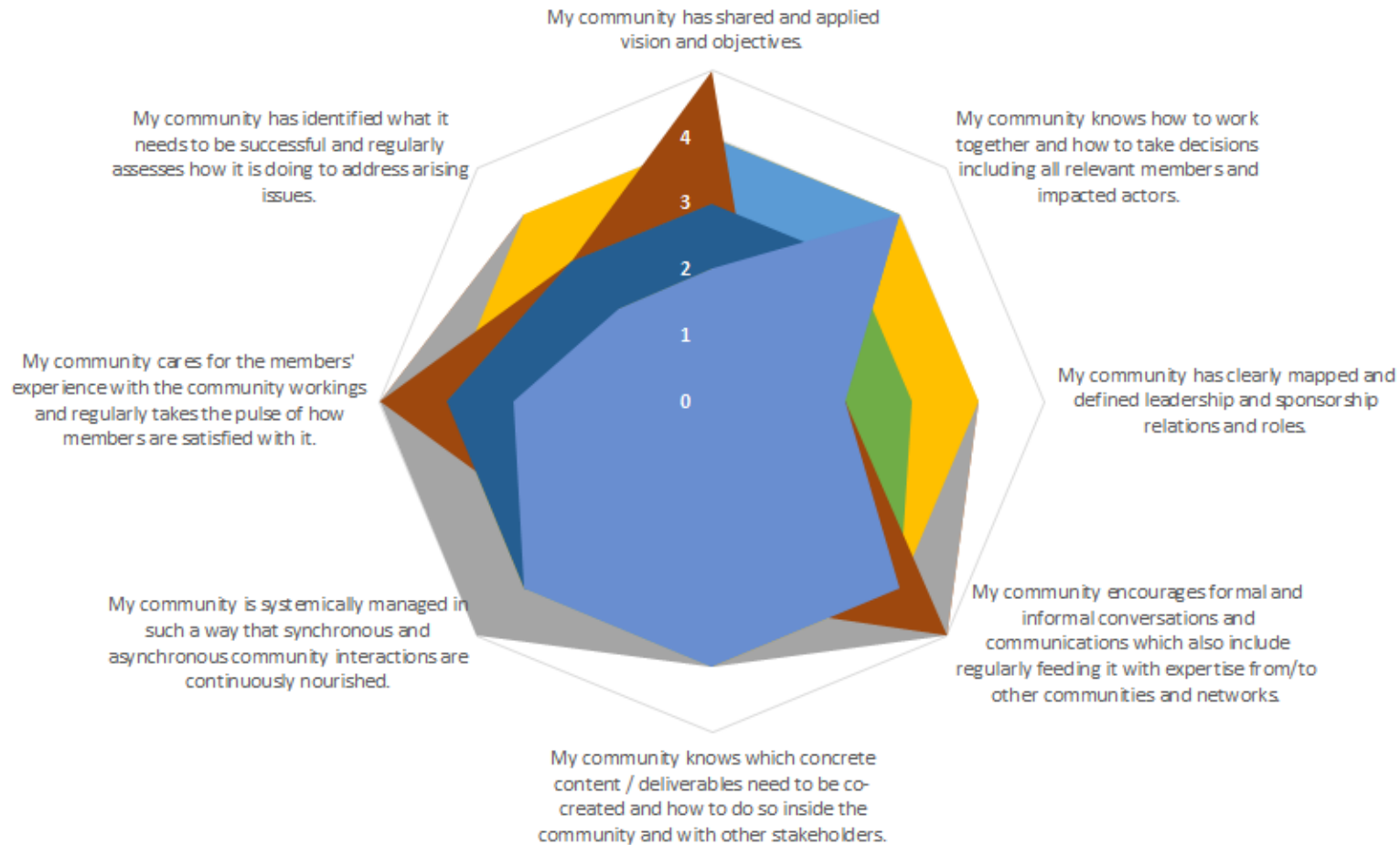
- Passive push roles of communities are working fine:
  - filtering (curating),
  - amplifying and
  - convening
- Proactive pull roles of communities need improvement
  - Investing and providing
  - Community-building
  - Learning and facilitation

# The Communities of Practice Success Wheel methodology





# The European Commission and Joint Research Centre Community Profiles (snapshot)



## Communities are valued for:

- Participation and engagement
- Community knowledge retention and circulation
- Shared vision and leadership/stakeholder (relations)
- Trust, confidence and sense of community
- Inclusive governance/communication
- Continuous evaluation

# Keep in touch



EU Science Hub: [ec.europa.eu/jrc](https://ec.europa.eu/jrc)



@EU\_ScienceHub



EU Science Hub – Joint Research Centre



EU Science, Research and Innovation



EU Science Hub

# Thank you

*Coralia Catana, [coralia.catana@ext.ec.europa.eu](mailto:coralia.catana@ext.ec.europa.eu), @CoraliaCatana*  
*Susanne Szkola, [susanne.szkola@ec.europa.eu](mailto:susanne.szkola@ec.europa.eu), @SusanneSzkola*

European Commission, Joint Research Centre,  
H.2. Knowledge Management Methodologies,  
Communities and Dissemination

This presentation has been prepared for internal purposes. The information and views expressed in it do not necessarily reflect an official position of the European Commission or of the European Union.

Except otherwise noted, © European Union (2021). All Rights Reserved.